

Non-invasive Prenatal Testing of Trisomies 21 and 18 by Massively Parallel Sequencing of Maternal Plasma DNA in Twin Pregnancies

Xuan Huang^{1*}, Jing Zheng^{2*}, Min Chen^{3,4,5*}, Yangyu Zhao^{6*}, Chunlei Zhang², Lifu Liu², Weiwei Xie², Shuqiong Shi⁷, Yuan Wei⁶, Dongzhu Lei⁸, Chenming Xu⁹, Qichang Wu¹⁰, Xiaoling Guo⁷, Xiaomei Shi¹, Yi Zhou¹, Qiufang Liu^{2,11}, Ya Gao^{2,11}, Fuman Jiang^{2,11}, Hongyun Zhang^{2,11}, Fengxia Su², Huijuan Ge², Xuchao Li², Xiaoyu Pan^{2,12}, Shengpei Chen^{2,13}, Fang Chen^{2,14,15}, Qun Fang^{1#}, Hui Jiang^{2,14,16,17#}, Tze Kin Lau^{18#}, Wei Wang^{2, 11,15,16#}

¹*Fetal Medicine Center, Department of Obstetrics and Gynecology, First Affiliated Hospital of Sun Yat-sen University, Guangzhou, Guangdong, China*

²*BGI-Shenzhen, Shenzhen, China*

³*Department of Fetal Medicine and Prenatal Diagnosis, the Third Affiliated Hospital of Guangzhou Medical University, Guangdong, China*

⁴*Obstetrics & Gynecology Institute of Guangzhou, Guangdong, China*

⁵*Key Laboratory for Major Obstetric Diseases of Guangdong Province, Guangdong, China*

⁶*Department of Gynecology and Obstetrics, Peking University Third Hospital, Beijing, China*

⁷*Maternal and Child Healthcare Hospital of Foshan, Guangdong, China*

⁸*People's Hospital of Chenzhou, Hunan, China*

⁹*Key Laboratory of Reproductive Genetics, Zhejiang University, Hangzhou, China*

¹⁰*Maternal and Child Health Care Hospital of Xiamen, Fujian, China*

¹¹*Clinical Laboratory of BGI Health, BGI-Shenzhen, Shenzhen, China*

¹²*School of Bioscience and Bioengineering, South China University of Technology, Guangzhou, Guangdong, China*

This article has been accepted for publication and undergone full peer review but has not been through the copyediting, typesetting, pagination and proofreading process which may lead to differences between this version and the Version of Record. Please cite this article as doi: 10.1002/pd.4303

¹³*Department of Biomedical Engineering, Southeast University, Nanjing, China*

¹⁴*Department of Biology, University of Copenhagen, Copenhagen, Denmark*

¹⁵*Shenzhen Key Laboratory of Transomics Biotechnologies, Shenzhen, China*

¹⁶*Shenzhen Engineering Key Laboratory of Birth Defects Screening, Shenzhen, China*

¹⁷*Guangdong Enterprise Key Laboratory of Human Diseases Genomics, Guangdong, China*

¹⁸*Fetal Medicine Centre, Paramount Clinic, Hong Kong*

* Xuan Huang, Jing Zheng, Min Chen and Yangyu Zhao contributed equally to this work.

#Correspondence to: Qun Fang (fang_qun@163.com), Hui Jiang (jjianghui@genomics.cn), Tze Kin Lau (drtklau@hkparamount.com) and Wei Wang (wangw@genomic.cn).

Correspondence

Dr. Qun Fang

Fetal Medicine Center, Department of Obstetrics and Gynecology, First Affiliated Hospital of Sun Yat-sen University, Guangzhou, Guangdong, China

Email: fang_qun@163.com

Dr. Hui Jiang

BGI-Shenzhen, Beishan Industrial Zone, Yantian District, Shenzhen, China

Email: jjianghui@genomics.cn

Dr. Tze Kin Lau

Fetal Medicine Centre, Paramount Clinic, Hong Kong

Email: drtklau@hkparamount.com

Dr. Wei Wang

BGI-Shenzhen, Beishan Industrial Zone, Yantian District, Shenzhen, China

Email: wangw@genomics.cn

Running head

Sequencing-based Prenatal Noninvasive Fetal Trisomy Test in Twin Pregnancies

Word count: Abstract 196; Text 2,243; Figure: 2; Table: 2; Reference 24.

Conflict of interest statement: Jing Zheng, Chunlei Zhang, Lifu Liu, Weiwei Xie, Qiufang Liu, Ya Gao, Fuman Jiang, Hongyun Zhang, Fengxia Su, Huijuan Ge, Xuchao Li, Xiaoyu Pan, Shengpei Chen, Fang Chen, Hui Jiang, Wei Wang were employees of BGI-Shenzhen and none of the other authors have any financial relationship with BGI-Shenzhen.

Funding statement

The study was funded by the Shenzhen Engineering Laboratory for Clinical Molecular Diagnostic, China National GeneBank-Shenzhen, the Medical Centre for Critical Pregnant Women in Guangzhou and Prenatal monitoring, In utero therapy and Follow-up after birth in the complexity of Twin Pregnancy (NO.2012J4300085).

Bulleled statements

What's already known about this topic?

Massively parallel sequencing (MPS) has been proved to be feasible for the noninvasive prenatal testing of trisomies 21 and 18 in singleton pregnancies. However, there is still lack of studies assessing the performance of this approach in twin pregnancies.

What does this study add?

This is a double-blind study of MPS-based noninvasive prenatal testing for trisomy 21 and 18 in twin pregnancies. We proved that the MPS-based test is highly accurate for detecting trisomies 21 in twin pregnancies.

Abstract

Objective: To assess the performance of non-invasive prenatal testing for trisomy 21 and 18 based on massively parallel sequencing of cell-free DNA from maternal plasma in twin pregnancies.

Method: A double-blind study was performed over 12 months. A total of 189 pregnant women carrying twins were recruited from seven hospitals. Maternal plasma DNA sequencing was performed to detect trisomy 21 and 18. The fetal karyotype was used as gold standard to estimate the sensitivity and specificity of sequencing-based noninvasive prenatal test.

Results: There were nine cases of trisomy 21 and two cases of trisomy 18 confirmed by karyotyping. Plasma sequencing correctly identified nine cases of trisomy 21 and one case of trisomy 18. The discordant case of trisomy 18 was an unusual case of monozygotic twin with discordant fetal karyotype (one normal and the other trisomy 18). The sensitivity and specificity of maternal plasma sequencing for fetal trisomy 21 were both 100%, and for fetal trisomy 18 were 50% and 100% respectively.

Conclusion: Our study further supported that sequencing-based non-invasive prenatal testing of trisomy 21 in twin pregnancies could be achieved with a high accuracy, which could effectively avoid almost 95% of invasive prenatal diagnosis procedures.

Introduction

The incidence of multiple pregnancies has increased since the 1980s in many countries¹⁻³. In Canada, the rate of multiple births increased from 2.2% to 3.0% between 1995 and 2004⁴. Multiple gestations have become more common due to the expanded use of assisted reproductive techniques (ART). It is well known that twin gestations are associated with higher incidence of fetal structural abnormalities as well as fetal Down syndrome mainly because of the overall higher maternal age amount those with ART^{5, 6}. Conventional screening methods for fetal Down syndrome using second trimester biochemistry or first trimester combined ultrasound and biochemistry have been widely used for decades in singleton pregnancy. However, their applications in twin pregnancy have been limited by their relatively lower sensitivity and specificity in this group of patients⁷⁻⁹. Therefore, there is an urgent need to develop a better screening test for twin pregnancies which are at higher risk of fetal aneuploidies.

The discovery of cell-free fetal DNA (cffDNA) in maternal plasma opened a new direction for noninvasive prenatal testing¹⁰. The rapid development of massively parallel sequencing (MPS) technology has made the dream of a highly accurate Non-invasive Prenatal Testing (NIPT) a reality. In the past five years, several research groups have reported that the sensitivity and specificity in detecting fetal trisomy 21 and 18 using sequencing-based NIPT in singleton pregnancies were over 99%¹¹⁻¹⁵. Three published studies also reported the potential of this new approach in twin pregnancies¹⁶⁻¹⁸. However, only one of these three reports was performed in a non-experimental study setting with small sample size. There is a need for larger studies to confirm the accuracy of this new approach in twin pregnancy.

This article is protected by copyright. All rights reserved.

In this double-blind study, we recruited 189 pregnant women carrying twins to assess the accuracy of sequencing-based NIPT for trisomy 21 and 18. Maternal blood was taken before invasive sampling and all sequencing-based tests for trisomy 21 and 18 were performed in an independent clinical lab. The sensitivity and specificity of sequencing-based test in twin pregnancies were calculated by comparing with karyotyping results. Our study may provide useful information and experience to clinicians who are interested in the application of this technology.

Methods

Samples Collection and Overall Design

189 participants from seven medical centers, who opted to have an invasive procedure for prenatal diagnosis, were recruited for this study. The inclusion criterion was twin pregnancies that required invasive prenatal diagnosis by amniocentesis, chorionic villus sampling or cordocentesis. The indications for invasive tests included abnormal maternal serum screening, abnormal sonographic signs, or maternal anxiety. Women with intra-uterine fetal demise at the time of sampling or without fetal karyotype results were excluded from this study.

Approvals were obtained from the institutional review board of BGI-Shenzhen. Informed written consent was obtained from each participant.

Maternal blood was sampled before invasive procedures and delivered to the clinical laboratory of BGI Health immediately as a clinical sample. Then the plasma DNA was isolated. The sequencing-based test and analysis were completed in seven working days once a sample was received. The sequencing -based test and full karyotyping analysis were performed in the clinical lab of BGI Health and the local medical centers respectively. The

karyotyping result and the sequencing result were kept confidential to the respective analyzing institution until the final analysis. The sensitivity and specificity of the sequencing-based test in detecting fetal aneuploidies were calculated by comparing with karyotyping. The overall design was shown in Figure 1.

Maternal Plasma DNA Sequencing

Five milliliters of peripheral blood was obtained from each participant in an EDTA-anticoagulated tube before invasive procedures, and plasma was separated within eight hours following a double-centrifugation protocol.

All subsequent procedures, including cell-free DNA isolation, library construction and sequencing, were performed at an ISO/IEC 17025 certified clinical laboratory in Shenzhen, following previously reported workflow¹⁹.

Bioinformatics analysis for the detection of Trisomy 21 and 18

Analysis of the sequencing data and detection of fetal aneuploidies were according to previously reported methodology for singleton pregnancy²⁰. Briefly, a binary hypothesis t-test and logarithmic likelihood ratio L-score between the two t-tests were used to classify whether the fetuses had trisomy 21 or 18 or not. If both the t-score were >2.5 and the L-score was >1 , the sample was in the high-risk zone. If either the t-score was >2.5 or the L-score was >1 the sample was in the warning zones. If the t-score was <2.5 and the L-score was <1 , the sample was in the low-risk zone.

According to our method, mosaicism and deletion/duplication could also be detected. If a sample result was in the “Low-risk Zone”, the pregnancy was normal. If a sample result was in the “High-risk Zone”, the pregnancy was affected. Cases falling in the “Warning Zone 1”

were classified as affected, but usually due to the presence of mosaicism or partial trisomy. Such cases were reported as high-risk but supplemented with appropriate comments. Cases in “Warning Zone 2” were likely affected pregnancies but with inadequate fetal DNA concentration. If clinically allowed, a repeat blood sampling and sequencing experiment would be repeated. Otherwise, a high-risk report was issued. This classification was used in both singleton and twin pregnancy in the laboratory. Of course, mosaic cases with high percentage of the abnormal cell line might fall into the high risk zone, while those with very low level mosaicism might be classified as low risk.

Further details of the methodology are included in the supplement.

Karyotyping Analysis

Invasive sampling for each case was performed after the peripheral blood was drawn. The metaphase chromosome G-banding karyotyping was performed at a level of 320-400 bands. The results of karyotyping were used as the gold standard to calculate the sensitivity and specificity of sequencing-based NIPT. 95% confidence intervals (CIs) were evaluated based on standard normal distribution.

Results

Study Population

A total of 189 pregnant women from seven medical centers were recruited in this study. Basic characteristics of the study population are shown in Table 1. The maternal age ranged from 22 to 44 years with a median of 31, and 33.9% (64/189) were 35 years old or above. The median gestational age at the time of blood sampling was 19 weeks. There were 31 mono chorionic diamniotic (MCDA) twins (16.4%), 2 mono chorionic monoamniotic (MCMA) twins (1.1%)

and 152 dichorionic diamniotic (DCDA) twins (80.4%). Chorionicity was not unknown in 4 cases (2.1%). Method of conception was available in 183 participants, among which 59.8% (113/183) were from ART.

Karyotyping Result

Karyotyping result was obtained in all cases. The method of invasive test was chorionic villus sampling in four cases (2.1%), amniocentesis in 178 cases (94.2%) and cordocentesis in seven cases (3.7%). There were nine cases of trisomy 21 and two cases of trisomy 18, with seven cases in DCDA pregnancies, one case of trisomy 18 in a MCDA pregnancy and three cases without information of chorionicity (Table 2). Only one of the two fetuses was affected in all positive cases.

Identification of fetal trisomies 21 and 18 by NIPT

Using our bioinformatics analysis approach, there were a total of ten screened positive cases with a gestational age ranged from 13 to 28 weeks with a median of 18 weeks. All nine cases of trisomy 21 and one case of trisomy 18 were correctly identified. Seven of them were results of assisted reproduction. There was one discordant case (Positive Case11 in Table 2) for trisomy 18 at a gestational age of 25 weeks, with a t-score of 0.04 and L-score of 0.02 (Figure 2 & Table 2).

In this cohort, the sensitivity and specificity of fetal trisomy 21 by NIPT were both 100%, and for fetal trisomy 18 were 50% and 100% respectively.

Follow-up investigations

Among the ten true positive cases, fetal reduction of the abnormal fetus was performed in eight cases of trisomy 21 and one case of trisomy 18. The other one case of trisomy 21

decided to continue the pregnancy, and a normal fetus and an affected fetus with typical clinical phenotypes of trisomy 21 were delivered.

The MCDA case with discordant result for trisomy 18 test was recruited at 25th week of gestation. Full karyotyping analysis of amniocentesis, performed for sonographic anomalies, confirmed that one fetus was affected by trisomy 18 while the other was normal. Further DNA finger printing analysis confirmed that it was a monozygotic twin. After careful post-test genetic counseling, the pregnant woman decided to deliver the fetuses without any treatment. The patient delivered at 36th weeks. One fetus showed typical clinical phenotypes of trisomy 18, and died 2 days later. Unfortunately, placental tissue was not collected for further study.

The remaining 178 cases were classified as negative for both trisomy 21 and trisomy 18, all confirmed by karyotyping analysis. Pregnancy outcome was available in 173 cases while the remaining five cases were lost to follow up. Among the 173 with pregnancy outcome, 149 participants (86.1%) had delivered two normal fetuses, 16 (9.3%) resulted in abortion, and 8 (4.6%) had fetal reduction for reasons other than fetal trisomy 18 or 21.

Discussion

There are ample studies confirming the accuracy of NIPT in singleton pregnancies for the prenatal testing of fetal trisomy 21, and to a lesser extent trisomy 18. However, there is still scanty relevant data for twin pregnancies, including only three small series published so far. In two of them, which included 25 and 8 twin pregnancies respectively, with a total of nine Down syndrome, one trisomy 18 and one trisomy 13, were performed retrospectively on archived samples under experimental conditions^{17, 18}. The last and only prospective study

included only twelve twin pregnancies with one trisomy 21 fetus¹⁶. Although the above limited data all suggested that prenatal detection of fetal trisomy 21 by NIPT is probably as good as in singleton pregnancies, confirmation by larger series is required. This study was the largest one so far, included 189 twin subjects, and the blood samples were processed as real clinic specimen, providing a real reflection of the test performance. Our study confirmed that prenatal detection of fetal trisomy 21 by NIPT is highly accurate, with 100% sensitivity and specificity.

However, the performance on trisomy 18 is less satisfactory, with a sensitivity of only 50% and a specificity of 100%. The low detection rate for trisomy 18 was probably contributed by i) the small number of abnormal cases of two, and therefore estimations could be easily affected by sampling error, and ii) the fact that the discordant case was a rare case of discordant trisomy 18 in a monozygotic twin. This could be a result of trisomic rescue in one of the fetuses from a trisomy embryo, or a result of a post-zygotic event in an originally normal embryo. Since placenta is the major source of fetal DNA in maternal plasma, the success or failure of NIPT in detecting the fetal anomalies depends on the status of cells in the placenta. The proportion of abnormal cells in the placenta could be variable in a pregnancy with trisomic rescue, while the placenta could be totally normal if the underlying mechanism was a post-zygotic event. This low level of abnormal cells in the placenta might explain the discordant result²¹. Unfortunately, placental tissue was not available for further study in that case. Further data is required to provide a better estimation of the performance of NIPT for fetal trisomy 18.

It may be argued that NIPT is not good enough because if it is positive, we still do not know

which of the two fetuses is affected. However, for the far majority of cases in which both fetuses are normal, the NIPT will enable the couple to avoid any invasive test, because of the high sensitivity and specificity. NIPT enables the selection of almost only the affected pregnancies for invasive test. There is little doubt that NIPT out-performs any existing alternative Down syndrome screening tests. It is therefore reasonable to make this available to our pregnant women for consideration as a clinical screening strategy for prenatal screening of fetal trisomy 21.

Recently, there were several publications suggesting that non-invasive determination of zygosity is possible^{22,23}. It is therefore possible in the future to determine which of the two fetuses is affected in a screened positive case by NIPT. However, before that is feasible, all NIPT positive cases still requires confirmation by karyotyping of both fetuses, except in monozygotic twin pregnancies in which karyotyping of one sample may be adequate.

The major strengths of this study were the relative large sample size, and that all samples were processed immediately as clinical samples and therefore the results are reflection of the true clinical setting. However, there are several limitations. Firstly, the majority of cases were recruited in the second trimester, and only four subjects were recruited at a gestational age between 9 and 12 weeks. This was due to the relatively late medical records for pregnant women in most hospitals in China. Nonetheless, experience from singleton pregnancy by NIPT suggested that the detection rate of aneuploidy does not seem to be affected by gestational age beyond 12 weeks²⁴. Further study with twin subjects in early pregnancy will provide a direct answer. Lastly, the sample size of this study was still not large enough to be conclusive. But based on all available information, NIPT for fetal Down syndrome in twin

pregnancy is likely to be as accurate as in singleton pregnancies.

Conclusion

In this study, using sequencing-based test, we successfully identified chromosome aneuploidy in twin pregnancies. This study provided further clinical data supporting the application of this new noninvasive prenatal test in twin pregnancies.

References

1. Reynolds MA, Schieve LA, Martin JA *et al.* Trends in multiple births conceived using assisted reproductive technology, United States, 1997-2000. *Pediatrics* 2003, 111(5 Pt 2):1159-1162.
2. Luke B, Martin JA. The rise in multiple births in the United States: who, what, when, where, and why. *Clinical obstetrics and gynecology* 2004, 47(1):118-133.
3. Khoshnood B, Blondel B. Regional variations in trends for multiple births: a population-based evaluation in France, 1972-2003. *Twin research and human genetics : the official journal of the International Society for Twin Studies* 2007, 10(2):406-415.
4. Audibert F, Gagnon A. Prenatal screening for and diagnosis of aneuploidy in twin pregnancies. *Journal of obstetrics and gynaecology Canada : JOGC = Journal d'obstetrique et gynecologie du Canada : JOGC* 2011, 33(7):754-767.
5. Odibo AO, Lawrence-Cleary K, Macones GA. Screening for aneuploidy in twins and higher-order multiples: is first-trimester nuchal translucency the solution? *Obstetrical & gynecological survey* 2003, 58(9):609-614.
6. Hansen M, Kurinczuk JJ, Milne E *et al.* Assisted reproductive technology and birth defects: a systematic review and meta-analysis. *Human reproduction update* 2013, 19(4):330-353.
7. Spencer K. Screening for trisomy 21 in twin pregnancies in the first trimester using free beta-hCG and PAPP-A, combined with fetal nuchal translucency thickness. *Prenatal diagnosis* 2000, 20(2):91-95.
8. Cleary-Goldman J, Berkowitz RL. First trimester screening for Down syndrome in multiple pregnancy. *Seminars in perinatology* 2005, 29(6):395-400.
9. Vink J, Wapner R, D'Alton ME. Prenatal diagnosis in twin gestations. *Seminars in perinatology* 2012, 36(3):169-174.
10. Lo YM, Corbetta N, Chamberlain PF *et al.* Presence of fetal DNA in maternal plasma and serum. *Lancet* 1997, 350(9076):485-487.
11. Bianchi DW, Platt LD, Goldberg JD *et al.* Genome-wide fetal aneuploidy detection by maternal plasma DNA sequencing. *Obstet Gynecol* 2012, 119(5):890-901.
12. Norton ME, Brar H, Weiss J *et al.* Non-Invasive Chromosomal Evaluation (NICE) Study: results of a multicenter prospective cohort study for detection of fetal trisomy 21 and trisomy 18. *Am J Obstet Gynecol* 2012, 207(2):137 e131-138.
13. Lau TK, Chen F, Pan X *et al.* Noninvasive prenatal diagnosis of common fetal chromosomal aneuploidies by maternal plasma DNA sequencing. *J Matern Fetal Neonatal Med* 2012, 25(8):1370-1374.
14. Dan S, Wang W, Ren J *et al.* Clinical application of massively parallel sequencing-based prenatal noninvasive fetal trisomy test for trisomies 21 and 18 in 11,105 pregnancies with mixed risk factors. *Prenat Diagn*

- 2012, 32(13):1225-1232.
15. Palomaki GE, Deciu C, Kloza EM *et al.* DNA sequencing of maternal plasma reliably identifies trisomy 18 and trisomy 13 as well as Down syndrome: an international collaborative study. *Genet Med* 2012, 14(3):296-305.
 16. Lau TK, Jiang F, Chan MK *et al.* Non-invasive prenatal screening of fetal Down syndrome by maternal plasma DNA sequencing in twin pregnancies. *J Matern Fetal Neonatal Med* 2013, 26(4):434-437.
 17. Leung TY, Qu JZ, Liao GJ *et al.* Noninvasive twin zygosity assessment and aneuploidy detection by maternal plasma DNA sequencing. *Prenatal diagnosis* 2013, 33(7):675-681.
 18. Canick JA, Kloza EM, Lambert-Messerlian GM *et al.* DNA sequencing of maternal plasma to identify Down syndrome and other trisomies in multiple gestations. *Prenat Diagn* 2012, 32(8):730-734.
 19. Dan S, Wang W, Ren J *et al.* Clinical application of massively parallel sequencing-based prenatal noninvasive fetal trisomy test for trisomies 21 and 18 in 11 105 pregnancies with mixed risk factors. *Prenatal diagnosis* 2012, 32(13):1225-1232.
 20. Jiang F, Ren J, Chen F *et al.* Noninvasive Fetal Trisomy (NIFTY) test: an advanced noninvasive prenatal diagnosis methodology for fetal autosomal and sex chromosomal aneuploidies. *BMC Med Genomics* 2012, 5:57.
 21. Wang Y, Zhu J, Chen Y *et al.* Two cases of placental T21 mosaicism: challenging the detection limits of non-invasive prenatal testing. *Prenat Diagn* 2013.
 22. Zheng J, Xu C, Guo J *et al.* Effective noninvasive zygosity determination by maternal plasma target region sequencing. *PLoS one* 2013, 8(6):e65050.
 23. Qu JZ, Leung TY, Jiang P *et al.* Noninvasive prenatal determination of twin zygosity by maternal plasma DNA analysis. *Clinical chemistry* 2013, 59(2):427-435.
 24. Benn P, Cuckle H, Pergament E. Non-invasive prenatal testing for aneuploidy: current status and future prospects. *Ultrasound Obstet Gynecol* 2013, 42(1):15-33.

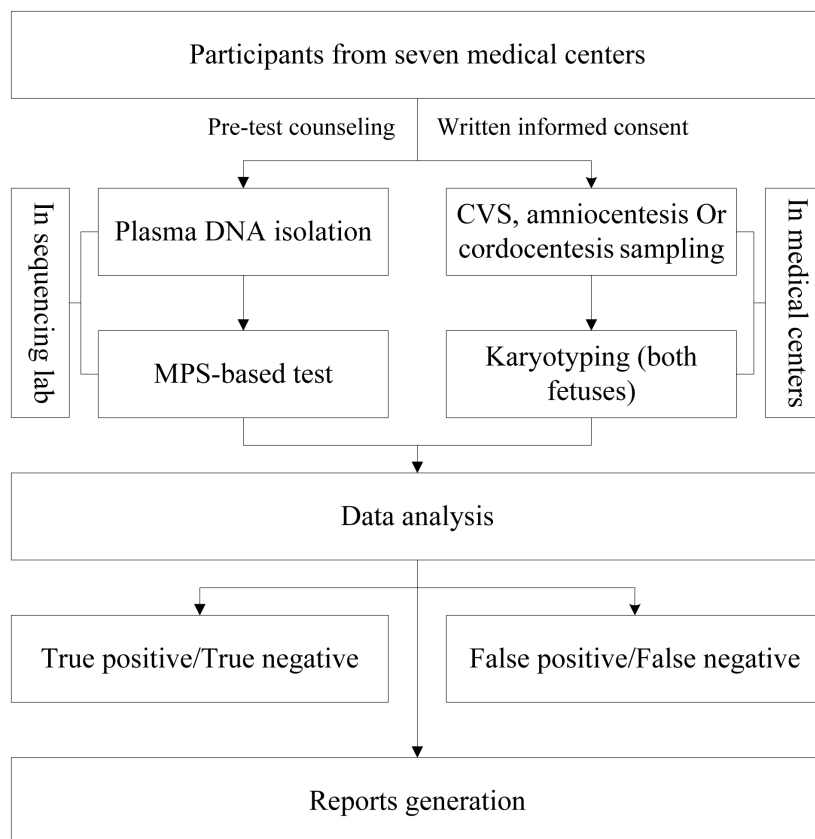


Figure 1. Overall design of this study. A double-blind study was designed. 189 participants were recruited from seven medical centers with pre-test counseling and written informed consent. Maternal blood was obtained before invasive sampling. Sequencing-based test and karyotyping analysis were simultaneously performed in the sequencing lab and local medical centers respectively. The sequencing-based results of all cases were used to calculate the sensitivity and specificity, comparing with karyotyping results.

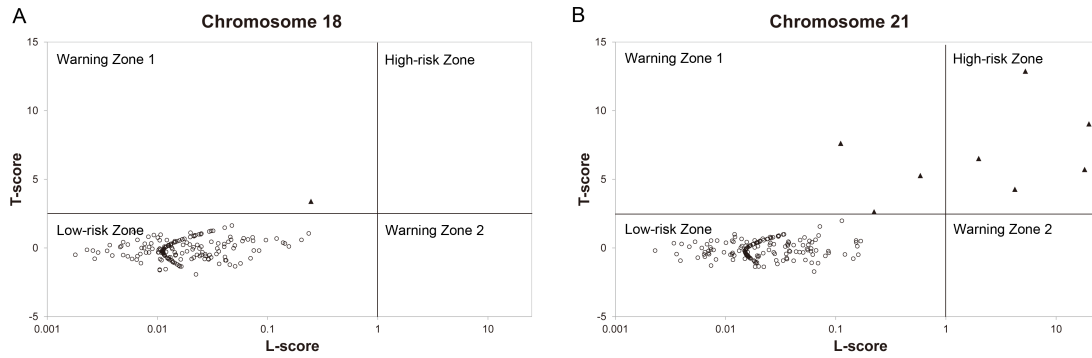


Figure 2. Identification of fetal trisomies 21 and 18. The risk of fetal aneuploidy was described by L-score (x-axis) and T-score (y-axis). Solid triangles represented the true aneuploidies, and open circles represented the negative samples. The high-risk zone is defined by an L-score > 1 and a t-score > 2.5. Figure A and B showed the performance for trisomy 18 and 21 detection, respectively.

Accepted Article

Table 1. Basic characteristics of the 189 participants.

Maternal age	
Median (yr)	31
Range (yr)	22-44
Advanced maternal age (≥ 35 yr)	64(33.9%)
18-24 yr (n,%)	13(6.9%)
25-29 yr (n,%)	57(30.2%)
30-34 yr (n,%)	55(29.1%)
35-39 yr (n,%)	54(28.6%)
≥ 40 yr (n,%)	10(5.3%)
Gestational age	
Median (wk)	19
Range (wk)	11-36
9-12 wk (n,%)	4(2.1%)
13-16 wk (n,%)	15(7.9%)
17-20 wk (n,%)	94(49.7%)
21-24 wk (n,%)	46(24.3%)
25-28 wk (n,%)	21(11.1%)
≥ 29 wk (n,%)	6(3.2%)
Unknown gestational age (n,%)	3(1.6%)
Chorionicity	
MCDA (n,%)	31(16.4%)
MCMA (n,%)	2(1.1%)
DCDA (n,%)	152(80.4%)
Unknown chorionicity (n,%)	4(2.1%)
Type of pregnancy	
Natural pregnancy (n,%)	70(37.0%)
Assisted pregnancy (n,%)	113(59.8%)
Unknown type of pregnancy (n,%)	6(3.2%)

Table 2. Clinical details of the 11 cases with fetal trisomy 21 and 18.

Sample	Maternal age (years)	Gestational age (weeks)	Placenta	Conception	NIPT result (t/L-score)	Karyotyping	Invasive test
Positive Case1	38	18	DCDA	ART	High risk for T21 (6.51/1.99)	Normal/T21	Amniocentesis
Positive Case2	38	18	DCDA	ART	High risk for T21 (9.03/19.89)	Normal/T21	Amniocentesis
Positive Case3	27	23	DCDA	NP	High risk for T21 (2.63/0.22)	Normal/T21	Amniocentesis
Positive Case4	42	18	DCDA	ART	High risk for T21 (7.62/0.11)	Normal/T21	Cordocentesis
Positive Case5	30	18	--	ART	High risk for T21 (4.27/4.23)	Normal/T21	Amniocentesis
Positive Case6	36	28	--	ART	High risk for T21 (12.87/5.27)	Normal/T21	Cordocentesis
Positive Case7	32	14	--	ART	High risk for T21 (5.72/18.18)	Normal/T21	Amniocentesis
Positive Case8	41	13	DCDA	NP	High risk for T21 (5.27/0.59)	Normal/T21	Amniocentesis
Positive Case9	41	13	DCDA	NP	High risk for T21 (6.25/22.56)	Normal/T21	Amniocentesis
Positive Case10	32	18	DCDA	ART	High risk for T21 (3.39/0.25)	Normal/T18	Amniocentesis
Positive Case11	30	25	MCDA	NP	Normal (0.04/0.02)	Normal/T18	Amniocentesis

Note: "--", means the missing information. DCDA, Dichorionic Diamniotic. MCDA, Monochorionic Diamniotic. ART, Artificial reproductive technology. NP, Natural pregnancy.